



home design:

the polaris



4



2



2

w!
wow homes

floor plan

The Polaris is a beautiful and spacious home designed to be the star of the street!

With 4 bedrooms, and open plan living areas, this home design is the perfect place for families to create lasting memories!

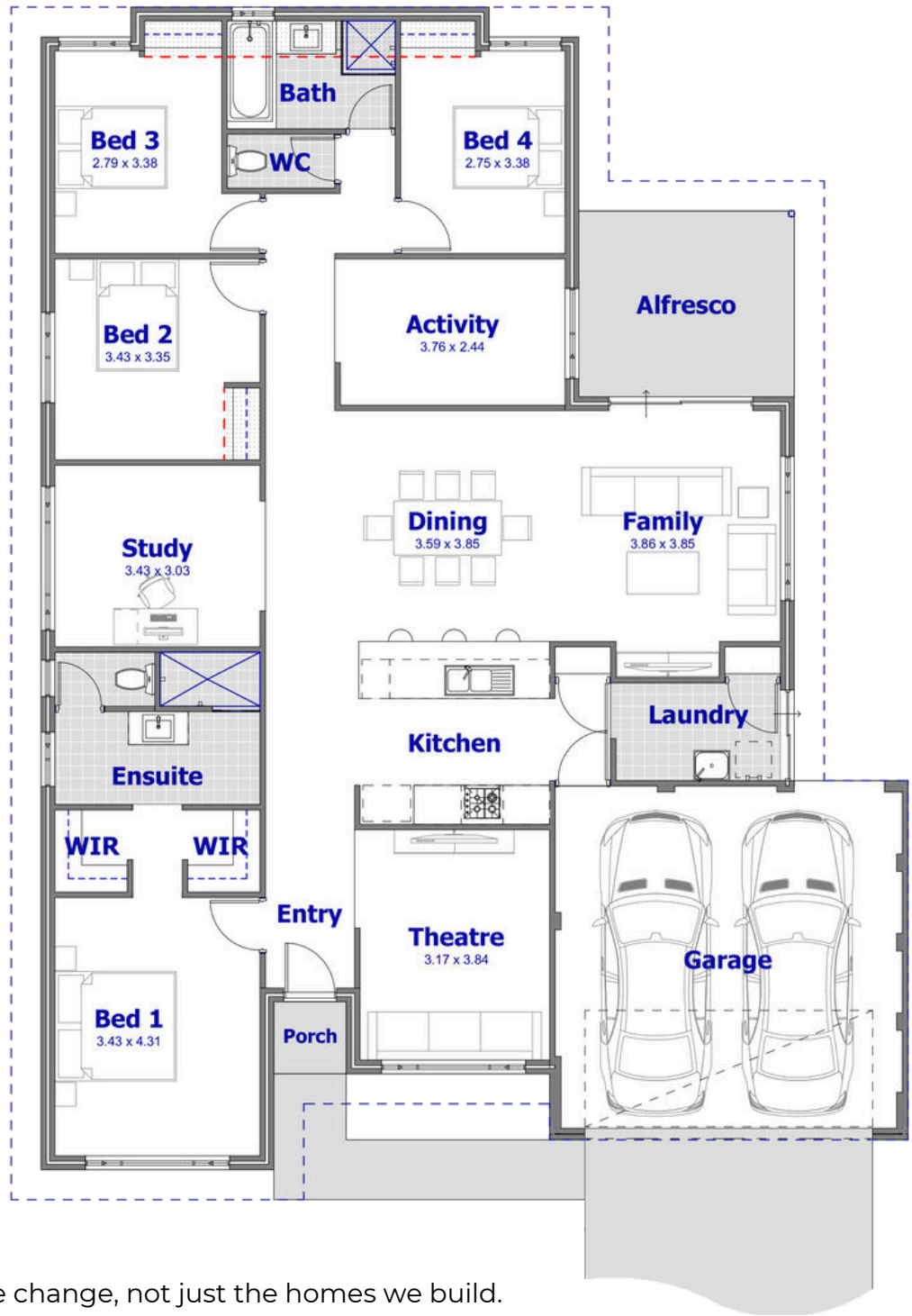
15m
←wide→

229_{m2}
total area

the WOW factor

We care about the lives we change, not just the homes we build.

With WOW craftsmanship and a deep understanding of the West Australian housing industry, we're here to make sure your new home experience is exciting, fulfilling and stress-free from start to finish.



wowhomes.com.au

Ground Floor, 188/198 Churchill Ave, Subiaco WA 6008

(08) 93180 6000



@wowhomeswa



@wowhomes




@wowhomes

w!
wow homes

explore our **WOW** promotions:

FIRST HOME BUYERS GET
TRIPLE THE GRANT

\$30,000*



[find out more](#) →

**Quick
BUILD TIMES**



[find out more](#) →

ZERO
SAVINGS?*

NO WORRIES!



[find out more](#) →

Good Looker
Elevation Upgrade



[find out more](#) →

**AFFORDABLE
HOUSE & LAND
PACKAGES**



[find out more](#) →

**REFER A
FRIEND
AND RECEIVE
\$2000 CASH!***



[find out more](#) →

wowhomes.com.au

Ground Floor, 188/198 Churchill
Ave, Subiaco WA 6008

(08) 93180 6000



@wowhomeswa



@wowhomes



@wowhomes

w!
wow homes

*T&CS AOOKY. SEE WEBSITE FOR DETAILS