



home design:

# the solaris



5



2



2

**w!**  
wow homes

# floor plan

The Solaris is a stunning family home designed to provide you with ample space to grow, create lasting memories, and truly make it your own. This thoughtfully crafted floor plan has every corner designed with your comfort and convenience in mind.

With 5 bedrooms, and a theatre room, there's so much to love about The Solaris.

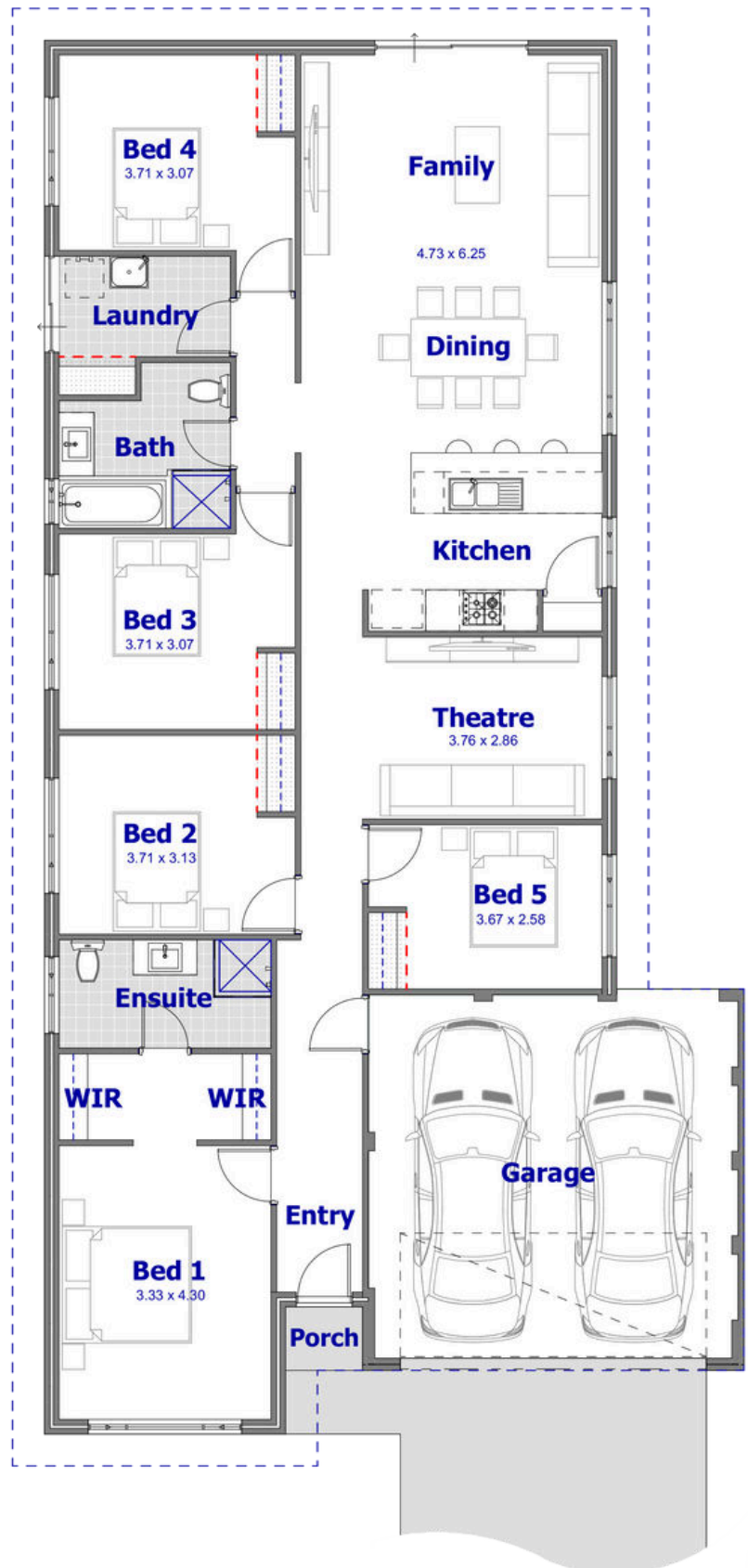
**12.5m**  
←wide→

**204m<sup>2</sup>**  
total area

## the WOW factor

We care about the lives we change, not just the homes we build.

With WOW craftsmanship and a deep understanding of the West Australian housing industry, we're here to make sure your new home experience is exciting, fulfilling and stress-free from start to finish.



[wowhomes.com.au](http://wowhomes.com.au)

Ground Floor, 188/198 Churchill Ave, Subiaco WA 6008

(08) 93180 6000



@wowhomeswa



@wowhomes



@wowhomes

**w!**  
wow homes



# explore our **WOW** promotions:

**FIRST HOME BUYERS GET  
TRIPLE THE GRANT**

**\$30,000\***



**find out more** →

**Quick  
BUILD TIMES**



**find out more** →

**ZERO  
SAVINGS?\***  
**NO WORRIES!**



**find out more** →

**Good Looker**  
Elevation Upgrade



**find out more** →

**AFFORDABLE  
HOUSE & LAND  
PACKAGES**



**find out more** →

**REFER A  
FRIEND  
AND RECEIVE  
\$2000 CASH!\***



**find out more** →

**wowhomes.com.au**

Ground Floor, 188/198 Churchill  
Ave, Subiaco WA 6008

(08) 93180 6000



@wowhomeswa



@wowhomes



@wowhomes

**w!**  
**wow homes**

\*T&CS AOOKY. SEE WEBSITE FOR DETAILS